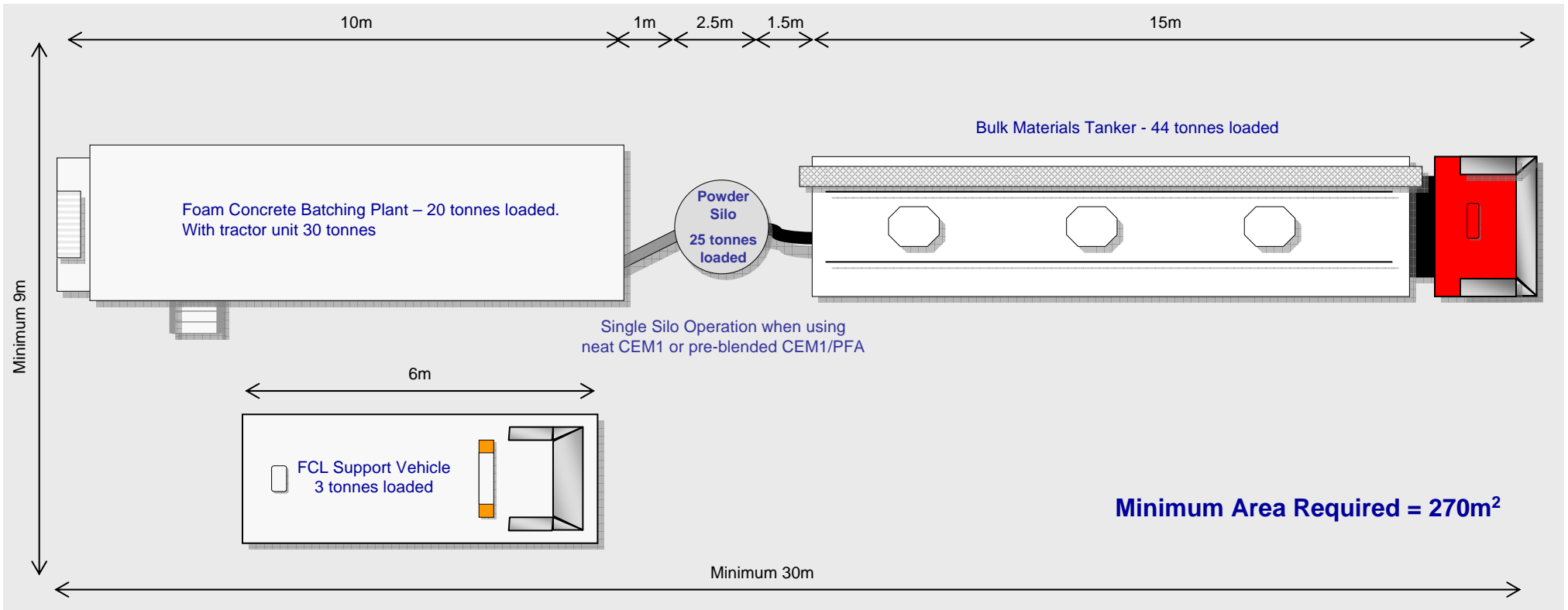




Foam Concrete Limited - Typical Site Footprint (1 Silo)



What we need from you:

- Sufficient room for tractor units to bring batching plant and silo to site and place in position
- Secure, stable and level site to accommodate batching plant @ 20 tonnes and silo @ 25 tonnes
- Sufficient room to allow bulk materials tanker @ 44 tonnes, to manoeuvre and discharge into silo
- Clean water supply at a minimum rate of 8m³/hr, via 50mm main

This illustration is not to scale and is for information only